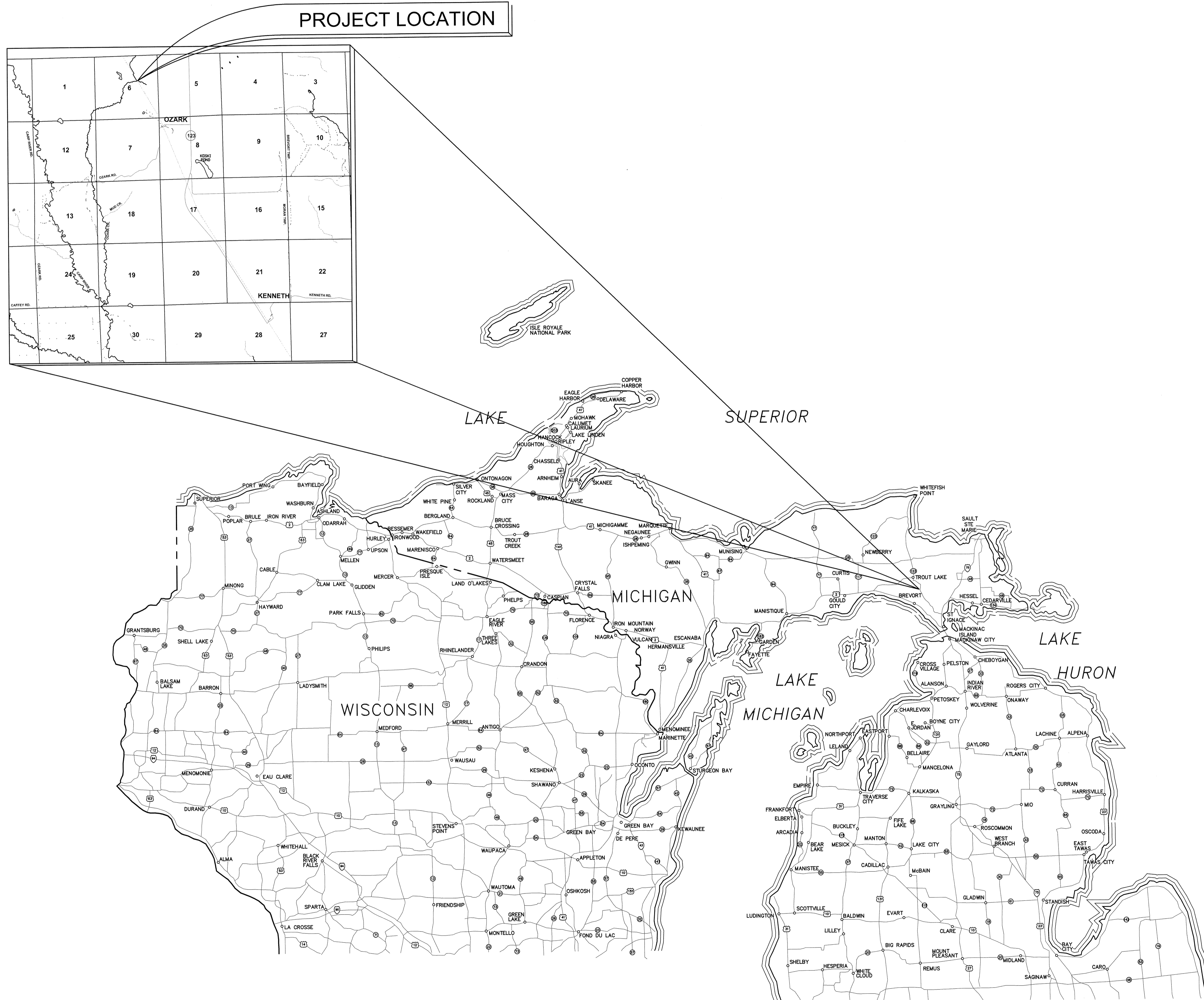


# STRAITS AREA SNOWMOBILE CLUB CARP RIVER BRIDGE DECK REPLACEMENT MACKINAC COUNTY



U.P. ENGINEERS & ARCHITECTS, INC.

ENGINEERING  
ARCHITECTURE  
PLANNING  
SURVEYING  
ENVIRONMENTAL

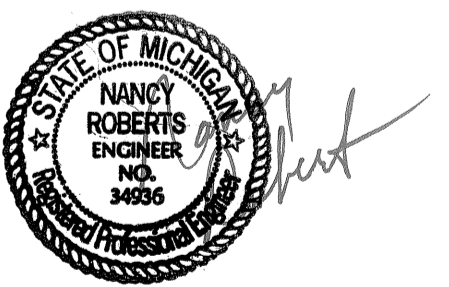
100 PORTAGE STREET  
HOUGHTON, MI 49931  
(906) 482-4810  
  
102 W. WASHINGTON, SUITE 217  
MARQUETTE, MI 49855  
(906) 228-6061  
  
611 MAIN STREET  
NORWAY, MI 49870  
(906) 563-5407  
  
707 ASHJUN STREET  
SAULT STE. MARIE, MI 49783  
(906) 635-0511  
  
1701 DUNLAP AVE. SUITE B  
MARINETTE, WI 54143  
(715) 732-4188

PROJECT TITLE:  
**CARP RIVER  
BRIDGE DECK  
REPLACEMENT**

OWNER:  
**STRAITS AREA  
SNOWMOBILE  
CLUB**

PROJECT LOCATION:  
**CARP RIVER  
MACKINAC CO.  
MICHIGAN**

BIDDING	08/11/09
OWNER REVIEW	10/21/08
AGENCY REVIEW	06/12/08
REVIEW	05/19/08
ISSUED FOR:	DATE:

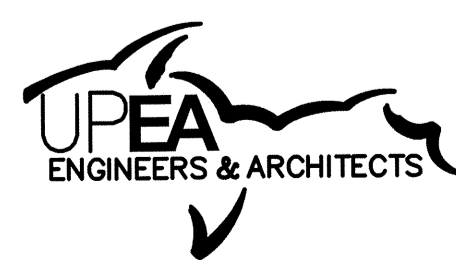


INDEX OF SHEETS	
SHEET	DESCRIPTION
1	COVER SHEET AND INDEX
2	BRIDGE DECK REPAIR PLAN AND DETAILS

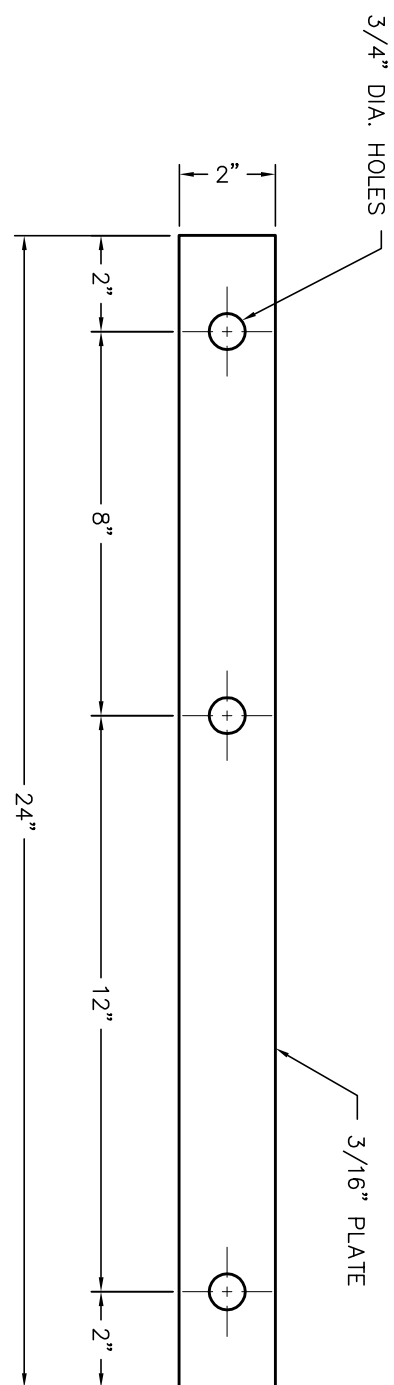
PROFESSIONAL SEAL  
PROJECT NO: S211-28251  
DRAWN BY: J.A.  
CHECKED: G.R.K.  
APPROVED: N.J.R.

**COVER SHEET  
AND INDEX**

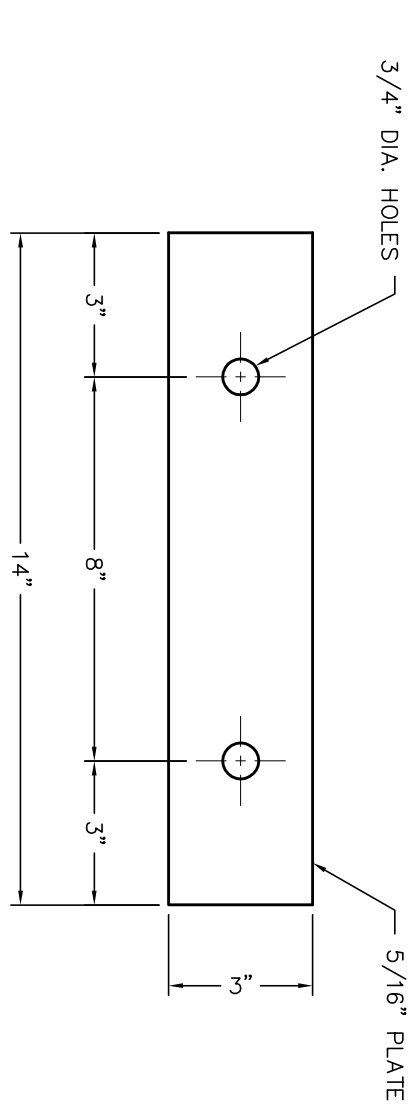
**1 OF 2**



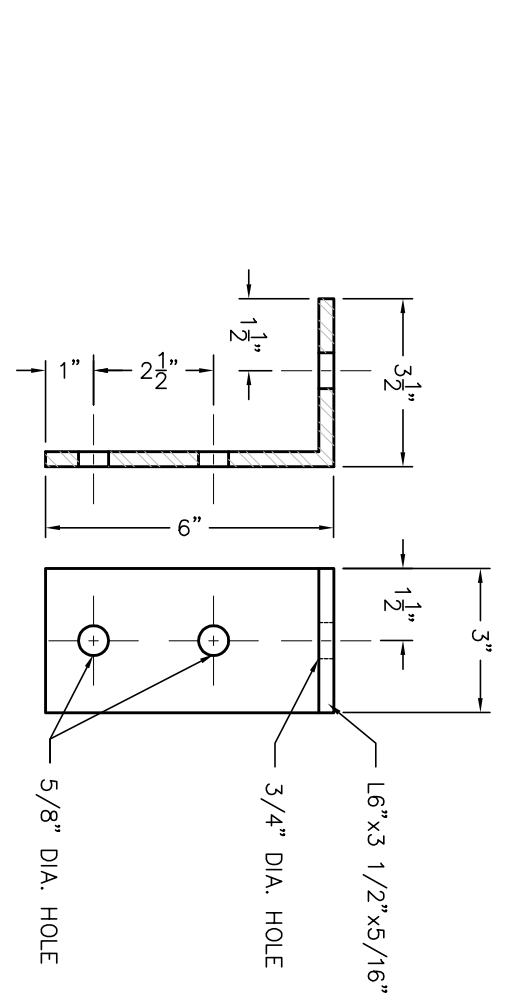
U.P. ENGINEERS & ARCHITECTS, INC.  
ENGINEERING ARCHITECTURE PLANNING SURVEYING ENVIRONMENTAL



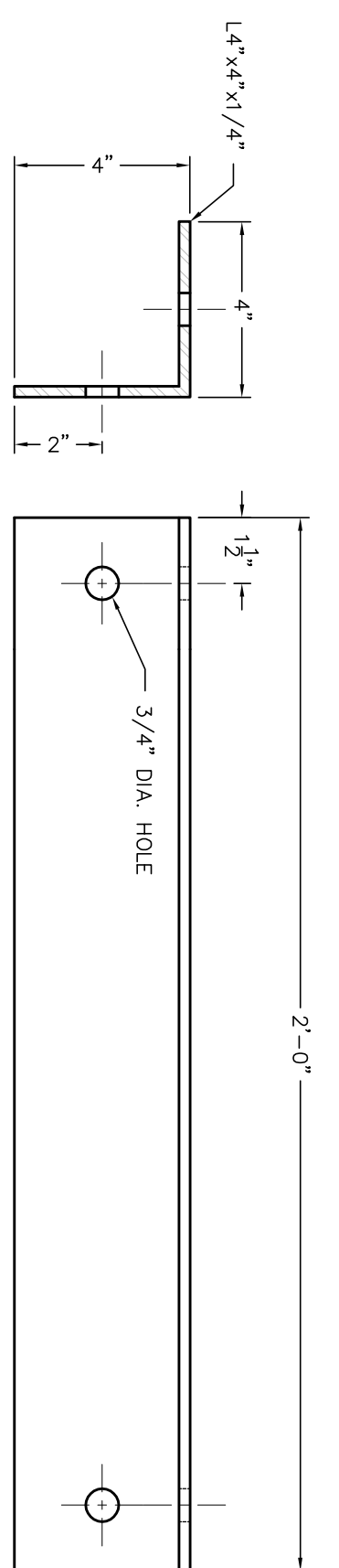
**D1** CONNECTOR PLATE (APPROX. - 56 EA.)  
SCALE: 1" = 1'-0"



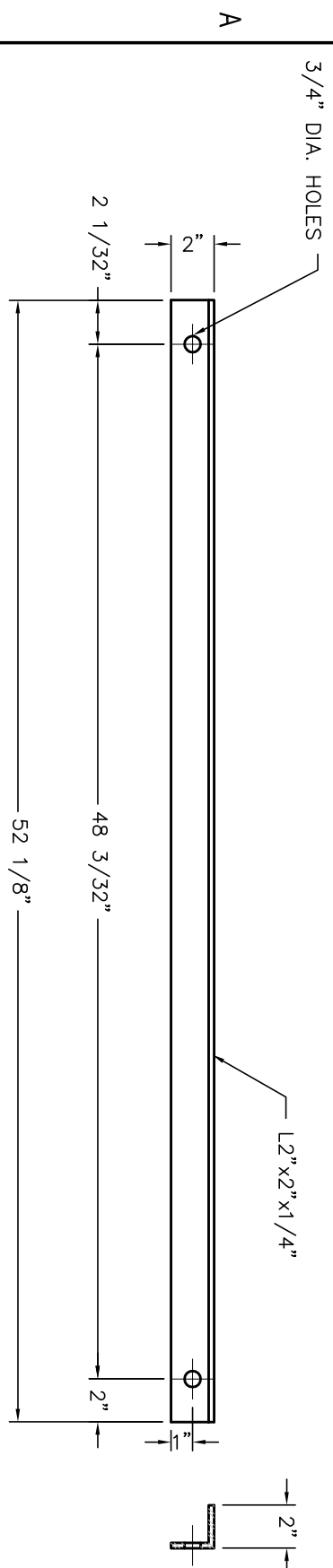
**C1** CONNECTOR PLATE (APPROX. - 100 EA.)  
SCALE: 1" = 1'-0"



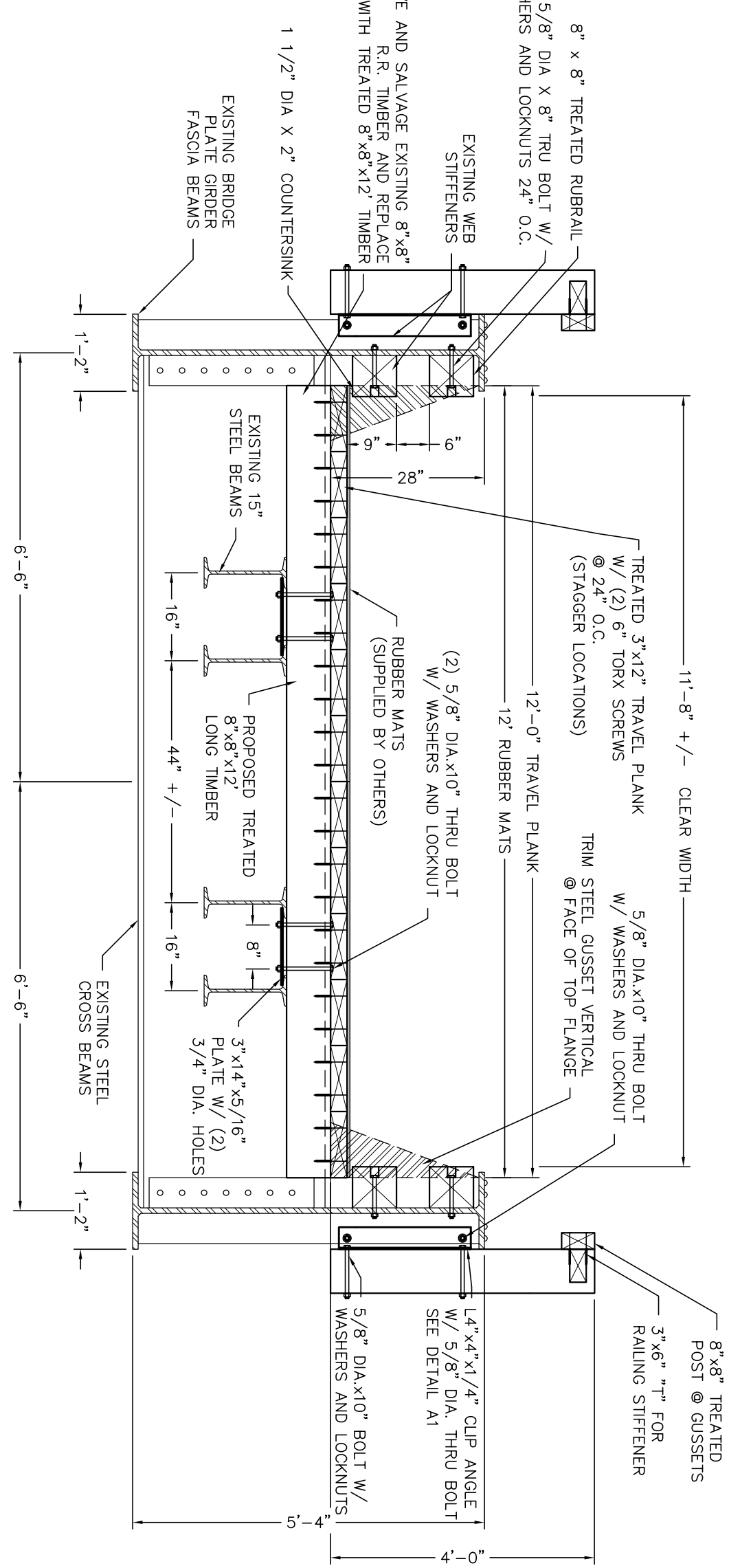
**B1** CLIP ANGLE (APPROX. - 100 EA.)  
SCALE: 1" = 1'-0"



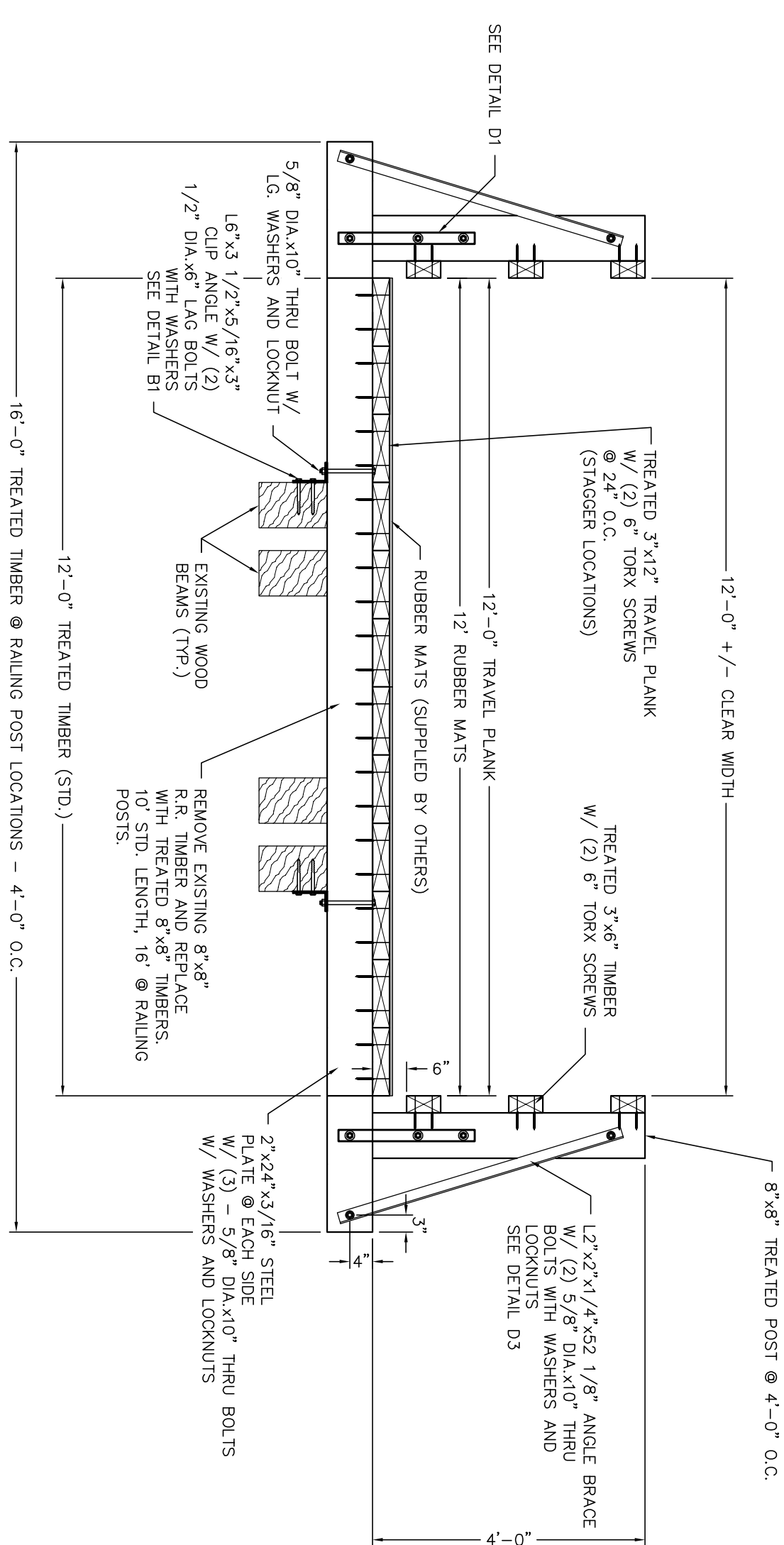
**A1** CLIP ANGLE (APPROX. - 12 EA.)  
SCALE: 1" = 1'-0"



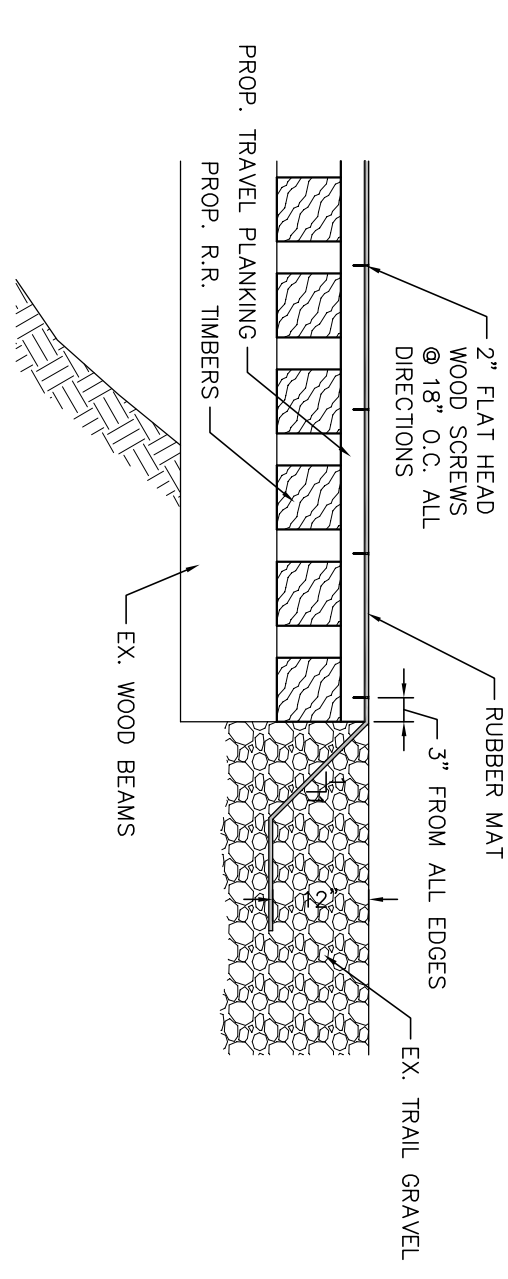
**D3** ANGLE BRACE (APPROX. - 28 EA.)  
SCALE: 1 1/2" = 1'-0"



**C3** BRIDGE SPAN SECTION  
SCALE: 1/2" = 1'-0"



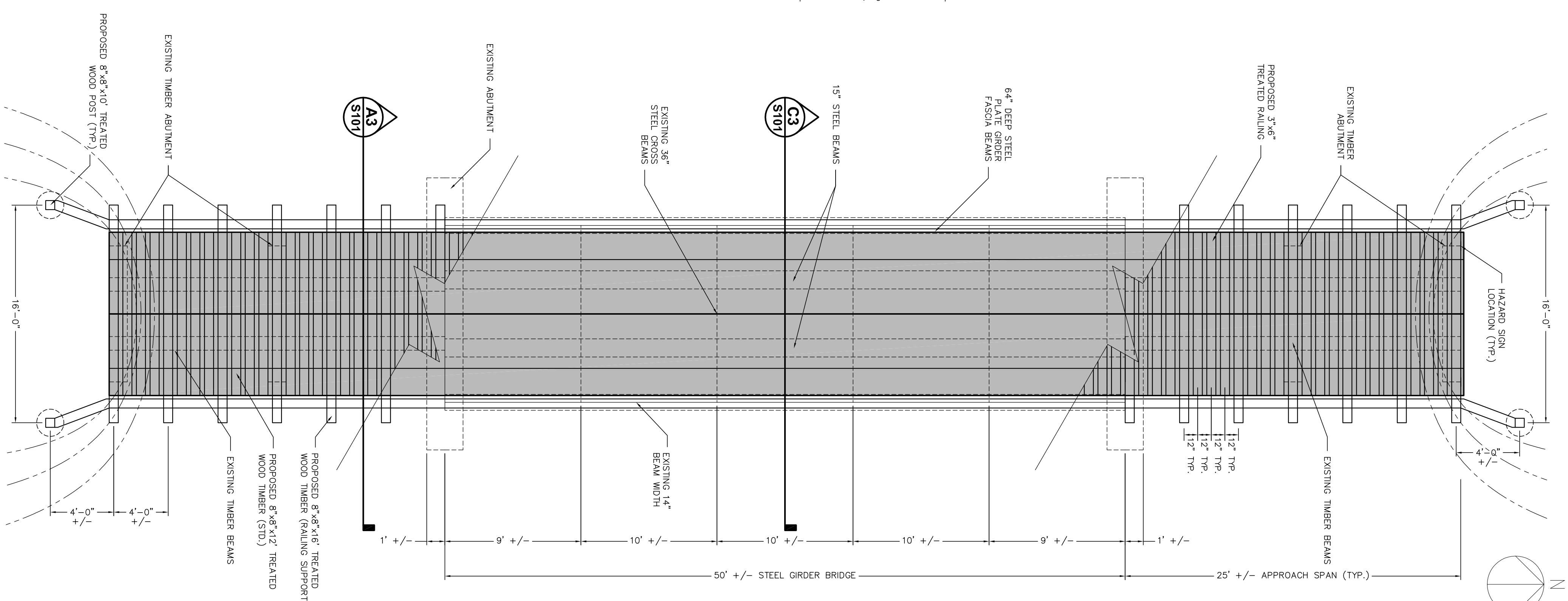
**A3** APPROACH SPAN SECTION  
SCALE: 1/2" = 1'-0"



**A5** RUBBER MAT ANCHORING DETAIL  
SCALE: 1/2" = 1'-0"

**PROPOSED MATERIAL QUANTITIES FOR INFORMATION ONLY**

28 EA	ANGLE BRACE, STEEL, L2"x2"x1/4"x3/2" 1/8"
100 EA	CONNECTOR PLATE, STEEL, 3"x14"x5/16"
100 EA	CLIP ANGLE, STEEL, L6"x3-1/2"x5/16"x3"
12 EA	CLIP ANGLE, STEEL, L4"x4"x1/4"x24"
40 EA	TIMBER, TREATED, 8"x8"x4"
40 EA	TIMBER, TREATED, 8"x8"x4"
50 EA	TIMBER, TREATED, 8"x8"x12"
14 EA	TIMBER, TREATED, 8"x8"x16"
990 FT	LUMBER, TREATED, 3"x6"
1200 FT	LUMBER, TREATED, 3"x6"
452 EA	BOLT, 5/8" DIA X 10"
464 EA	LOCKNUT, 5/8"
1152 EA	WASHER, 5/8"
200 EA	LAG BOLT, 1/2" DIA X 6"
1100 EA	WOOD SCREW, 1 1/2" X 1/4" O.C.
335 EA	WOOD SCREW, FLAT HEAD, 2"



**A5** BRIDGE PLAN  
SCALE: 3/16" = 1'-0"

**UP&A**  
ENGINEERS & ARCHITECTS

**U.P. ENGINEERS & ARCHITECTS, INC.**

ENGINEERING  
ARCHITECTURE  
PLANNING  
SURVEYING  
ENVIRONMENTAL

102 W. WASHINGTON STREET  
100 PORTAGE STREET  
HOUGHTON, MI 49931  
(989) 562-4910

511 MAIN STREET  
NORWAY, MI 49870  
(989) 563-5407

707 ASHLUM STREET  
SAULT STE. MARIE, MI 49783  
(989) 639-0511

1701 DUNLAP AVE SUITE B  
MANNINGVILLE, WI 54143  
(715) 732-4188

**PROJECT TITLE:**  
CARP RIVER  
BRIDGE DECK  
REPLACEMENT

**OWNER:**  
STRAITS AREA  
SNOWMOBILE  
CLUB

**PROJECT LOCATION:**  
CARP RIVER  
MACKINAC CO.  
MICHIGAN

ISSUED FOR:	DATE:
REVIEW:	05/19/08
AGENCY REVIEW:	06/12/08
OWNER REVIEW:	10/21/08
BIDDING:	08/11/09

**PROFESSIONAL SEAL**

PROJECT NO: SZ11-28251

DRAWN BY: J.A.

CHECKED: G.R.K.

APPROVED: N.J.R.

**BRIDGE DECK  
REPLACEMENT  
PLAN AND PROFILE**

**2 OF 2**